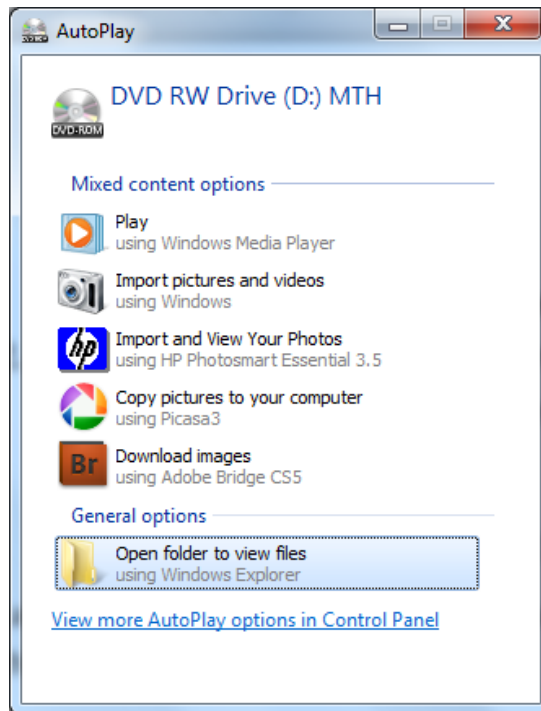


Loading RLOs from a CD

1. Insert the CD into the drive.
2. The AutoPlay window should appear after a few seconds. Click on **Open folder to view files**. (Alternatively click on Start – Computer and double click on your CD Drive)



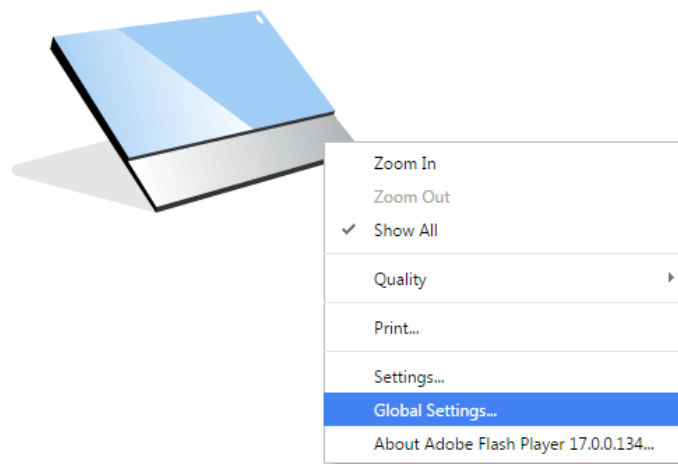
3. Double click on the **Library.html** file to open your browser and select the RLO you would like to load from the list.

No.	Lesson Code	Lesson Title
1	MTH_EN_701_011	Whole Numbers
2	MTH_EN_701_021	Multiplication and Division of Whole Numbers
3	MTH_EN_701_041	Addition and Subtraction
4	MTH_EN_701_051	Multiplication & division
5	MTH_EN_701_071	Partitioning Multiplication and Repeated Subtraction
6	MTH_EN_702_011	Different Angles
7	MTH_EN_702_021	Estimating Angles
8	MTH_EN_702_031	Measuring Angles
9	MTH_EN_702_032	Angles
10	MTH_EN_702_041	Angles at a Point and Angles on a Straight Line
11	MTH_EN_702_051	Perpendicular Lines, Parallel Lines
12	MTH_EN_702_052	Angles between Parallel Lines
13	MTH_EN_702_061	Angles
14	MTH_EN_703_011	Even and odd numbers
15	MTH_EN_703_021	Factors

Problems when loading RLOs

If RLOs are not loading from a CD or from your Hard Disk please follow these steps.

1. Make sure you are connected to the internet.
2. Right click on the RLO and select **Global Settings...** from the drop down menu.



3. From the side of the screen select the **Global Security Settings panel**.

Flash Player Help

Settings Manager

- Global Privacy Settings panel
- Global Storage Settings panel
- **Global Security Settings panel**
- Website Privacy Settings panel
- Website Storage Settings panel
- Protected Content Playback Settings panel
- Peer-Assisted Networking Panel

TABLE OF CONTENTS

Global Security Settings panel

Adobe® Flash® Player Settings Manager

Global Security Settings

Some websites may access information from other sites using an older system of security. This is usually harmless, but it is possible that some sites could obtain unauthorized information using the older system. When a website attempts to use the older system to access information:

Always ask Always allow Always deny

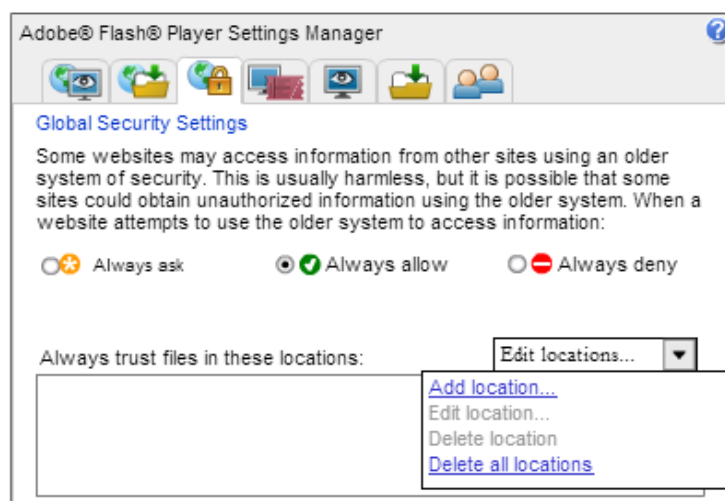
Always trust files in these locations:

Note: You may skip steps 2 and 3 and follow directly this link to bring up the : <http://bit.do/rlosettings>

I suggest that you add this link to your favourites.

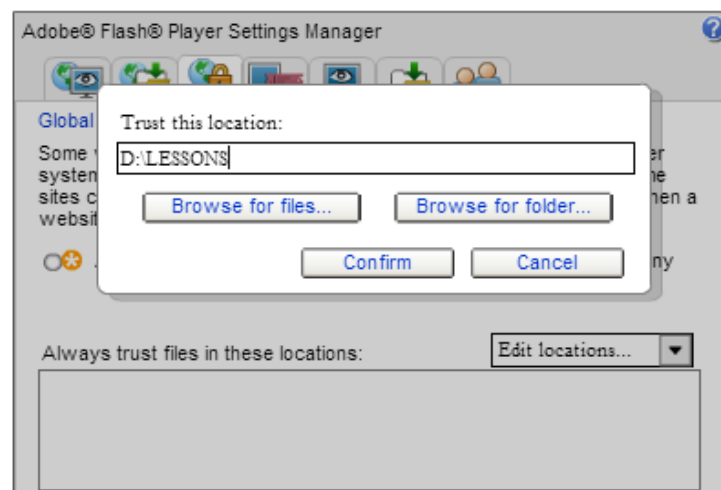
4. Click on **Edit locations...** and select **Add Location** from the drop down menu.

Global Security Settings panel



5. Type in the folder directory of your RLOs and click **Confirm**.
(Usually if you are accessing RLOs from the CD you need to type **D:\LESSONS**)

Global Security Settings panel



6. Your RLOs should now load correctly.



For more information please contact your eLearning support teacher.

André Bugeja – andre.bugeja@ilearn.edu.mt